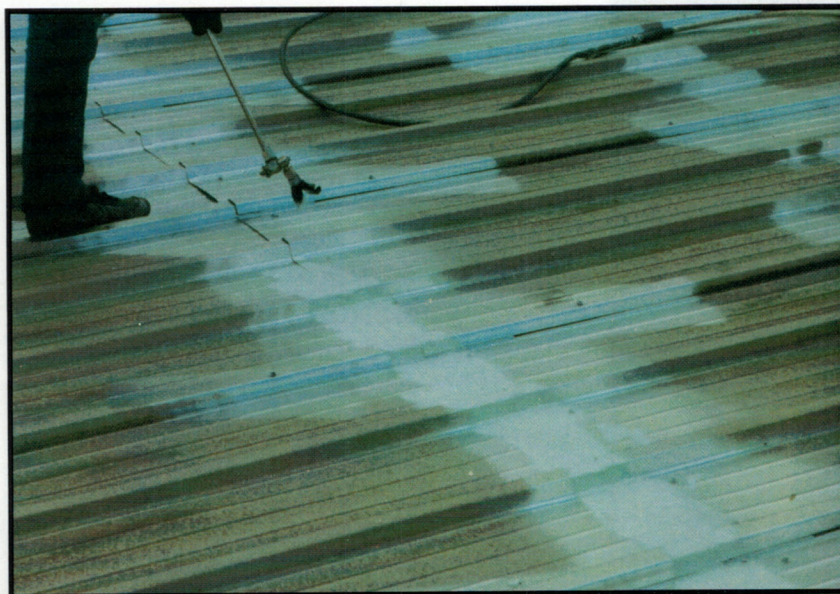


ETERNA-SEAL RUBBER SYSTEM FOR METAL ROOFS



1 - Proper preparation of the roof deck is essential to the long-term performance of any roofing system. Power washing is a requirement on all metal roofing systems prior to application of the Eterna-Seal System. Particular attention should be made on roofs with existing asphalt or water-base coatings. A Turbo-tip is required in conjunction with scraping or wire brushing to remove as much of the previous product as possible to achieve proper adhesion. Areas where rust is present should be treated using **RRC-600 (Rust Remover & Conditioner)**. This will protect the long-term integrity of the affected panels and insure proper adhesion.

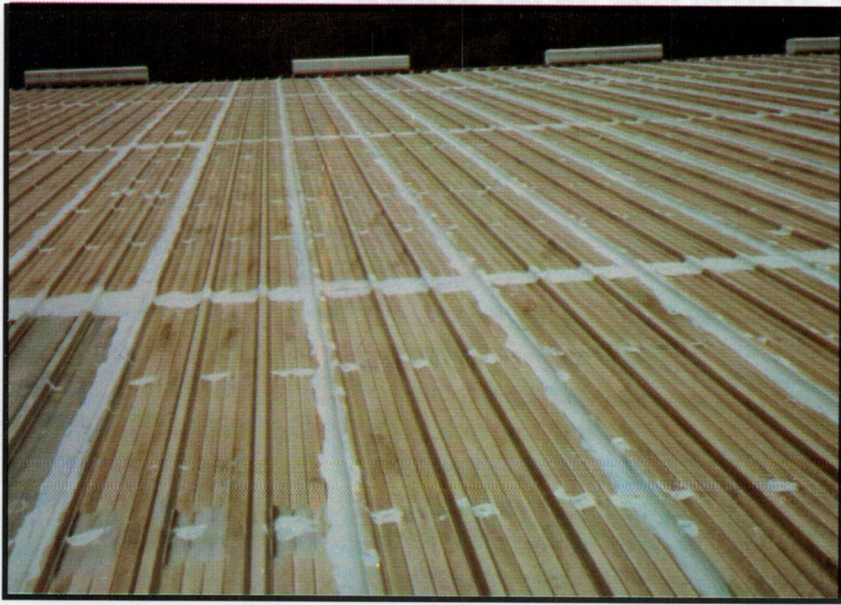
2 - Loose and defective fasteners must be tightened or replaced using oversized fasteners to ensure proper fastening to the substrate prior to coatings being installed. All loose seams should be secured with additional fasteners or stitch screws. Finally, any open seams, which remain, must be reinforced using **#7141 Super Seam Sealer and RH-53 Polyester Membrane** to insure a strong and durable waterproofing seal. Openings in excess of 1/8" should be sealed using **#7174 Trowel Grade Rubber** prior to applying **#7141 Super Seam Sealer**, to form a gasket between the metal to cushion any possible movement.



3 - All seams must be coated using **#7141 Super Seam Sealer** to provide adequate waterproofing protection over areas subject to thermal movement and shearing activity, including fasteners, vent stacks and areas where movement may be anticipated. **#7141 Super Seam Sealer** can be applied using brush or spray equipment.

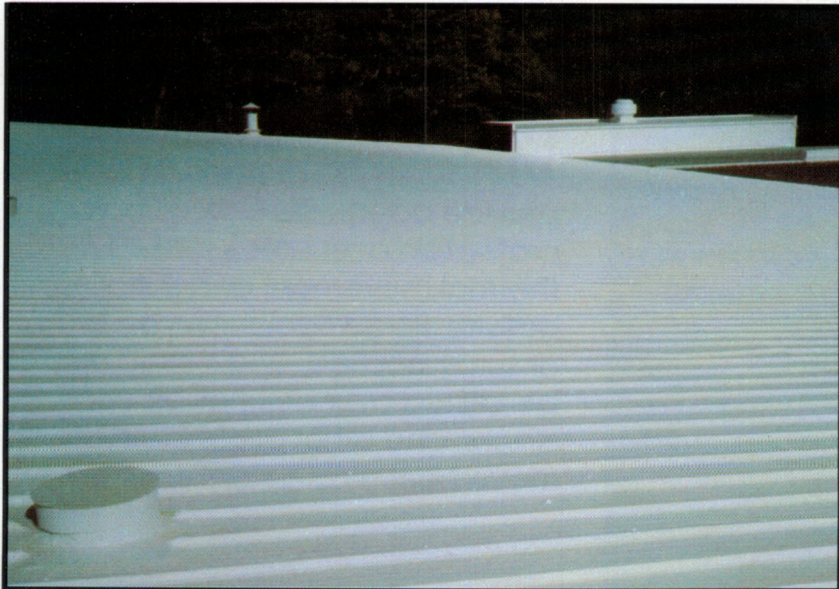
TRUCO INC.

4301 Train Ave., • Cleveland, Ohio 44113
(800) 227-4569 • (216) 631-1000 • Fax: (216) 281-0034



4 - Once all fasteners, seams and openings are properly sealed, the metal deck is watertight. The roof should now be top-coated using **#7140 Just Super** or **#7145 White Rubber Coating**. Unlike water base acrylic latex products, these formulas will not blister from high humidity, or wash off from sudden rainfall. Similarly, aluminized asphalts will "brown-out" when exposed to moisture in the curing process.

5 - Eterna -Seal White Rubber Coatings can be applied by brush, roller, or airless spray equipment. A two-coat application process is recommended to achieve proper coverage and the desired coating thickness. Though white is generally preferred, customized pastel colors are also available upon request.



6 - The finished roof is a monolithic rubber membrane with exceptional expansion & recovery characteristics, tensile strength, and UV resistance. This assures that the building will remain waterproof, energy efficient, and attractive for many years.

Truco, Inc.

"Everything for the Builder & Contractor"

3033 W. 44th St. • Cleveland, Ohio 44113
(800) 227-4569 • (216) 631-1000 • Fax: (216) 281-0034

"Metal" Roof Re-surfacing System



Truco's Eterna-Seal® Super seam sealer is applied to all seams and fasteners.



First coat of Truco's Eterna-Seal® rubber coating being applied with sprayer.



Final coat of Truco's Eterna-Seal® being applied resulting in a watertight membrane.

TRUCO INC.

TRUCO's "Metal" Re-surfacing System

Metal building owners have a wide variety of roofing systems to choose from, but few have been designed specifically for the restoration and maintenance of metal roofs. Instead, traditional roofing materials have been forced to conform with the unique requirements of the metal substrate. Aesthetic considerations aside, asphalt coatings are too brittle to bridge thermal-induced movement along seams, end laps, fastener heads, and roof protrusions. While single-ply systems provide a durable membrane, these materials were not designed for use over corrugated, irregular surfaces. Single-ply installations depend upon a flat surface mechanically fastened to the existing metal deck, a requirement which can add significant weight stress to the substrate. This rather costly approach also relies heavily on yet another set of fasteners perforating the original metal roof.

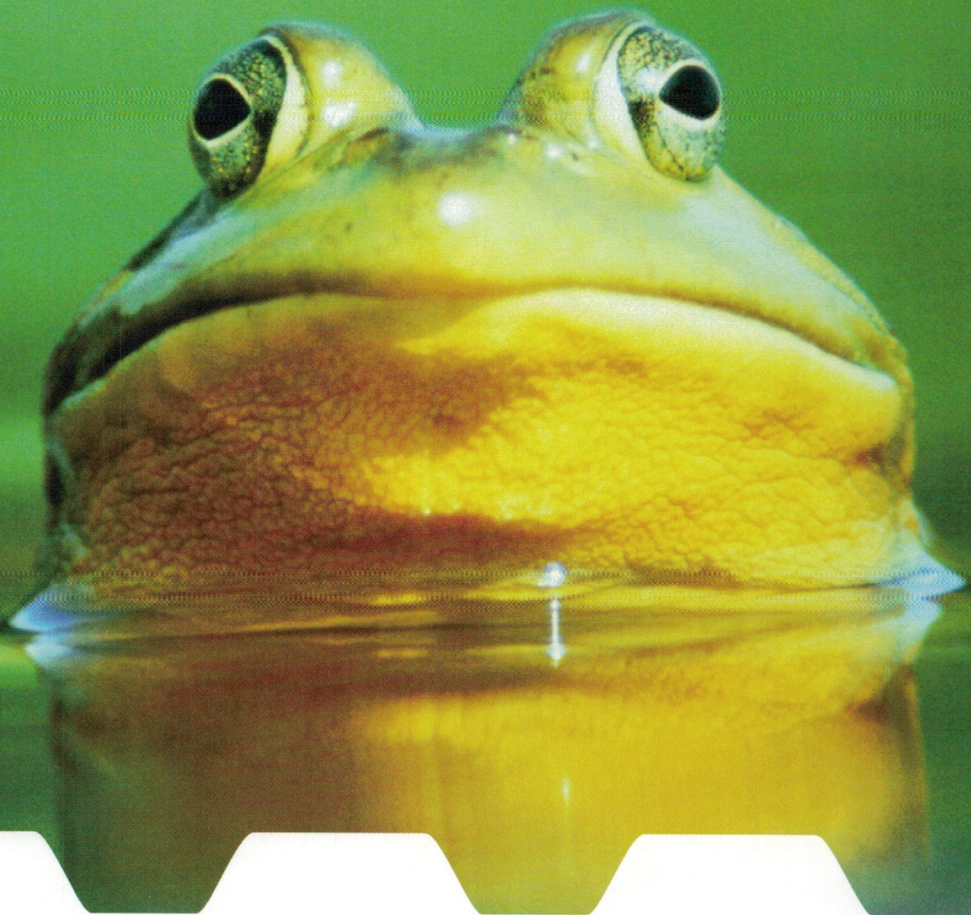
From this perspective, the use of lightweight, flexible coatings emerged as a major contributor in the metal roof restoration industry. These liquid rubber systems, referred to as elastomeric coatings, present an alternative to traditional asphalt and single-ply techniques. At the Youngstown Warren Airport in Youngstown, OH, the use of a fully-adhered, seamless rubber membrane was viewed as an aesthetically pleasing, economically acceptable option. The search began for an elastomeric system that provided the airport the maximum value for their roofing dollars. TRUCO's thermoplastic elastomeric surpassed all others for this project.

Unlike most elastomeric coatings, TRUCO's rubber does not require systemic reinforcement over vertical seams and fasteners. The superior elongation/recovery and tensile strength of the product lessens much of the labor associated with the fabrics and tapes typically specified. We've been specifying our synthetic rubber coatings for eighteen years—resulting in quality formulations supported by close communication with our applicators. Other properties include tenacious adhesion, high tensile strength, chemical & UV resistance and low moisture permeability. These components combine to produce a roofing system of unparalleled quality. A system which, when properly applied, assures building owners "Economical Quality Through Innovative Chemistry."

800/227-4569
216/631-1000
Fax: 216/281-0034
3033 West 44th Street
Cleveland, OH 44113

Visit Our Web Site at:
www.truco-inc.com

NATURE INVENTED "WATERTIGHT," WE JUST PERFECTED IT!



TRUCO INC.

VALUE ENGINEERED ROOF COATING SOLUTIONS

ON SIGHT TRAINING PROGRAM AVAILABLE

METAL

EPDM

URETHANE FOAM

HYPALON[®]



WINDSWEEP CONDOS
ETERNA-SEAL[®]
OVER EPDM



**MEMORIAL ELEMENTARY
SCHOOL**
ETERNA-SEAL[®]
OVER METAL



SARA LEE COFFEE & TEA
ETERNA-SEAL[®]
OVER HYPALON[®]

TRUCO, INC.

4301 Train Avenue
Cleveland, Ohio 44113

216 / 631 - 1000
800 / 227 - 4569

www.truco-inc.com



IS YOUR
ROOF A
DIAMOND IN THE
RUST
?

TRUCO INC.

**VALUE ENGINEERED
ROOF COATING SOLUTIONS**

ON SIGHT TRAINING PROGRAM AVAILABLE

LEAK FREE

DURABLE

ENERGY EFFICIENT

GUARANTEED



BOWLING GREEN STATE
UNIVERSITY ICE ARENA



NEW YORK BOARD
OF EDUCATION



TALBOT COUNTY
COMMUNITY CENTER

ETERNA-SEAL® OVER METAL

TRUCO, INC.

4301 Train Avenue
Cleveland, Ohio 44113

216 / 631 - 1000
800 / 227 - 4569

www.truco-inc.com



LEAKY METAL ROOF?

Stay dry with Eterna-Seal® – the liquid coating system with the strength and durability of a single-ply membrane.



BEFORE



AFTER

Eterna-Seal® creates a tough, pliable, “rubber blanket” over the entire roof surface.

Truco's remarkable Eterna-Seal system combines the strength and durability of a rubber membrane with the economy and application ease of a spray applied coating. Eterna-Seal creates a tough, pliable “rubber blanket” over the entire roof's surface, with extra thick protection over vulnerable areas like seams, fasteners, curbs, and penetrations. Because it is able to expand and contract along with the roof's thermal cycles. Eterna-Seal maintains its watertight protection when other coatings crack and fail. But don't take our word for it. Order a free dry sample of Eterna-Seal today and one from the competition. Stretch them both, just like your roof will as it expands and contracts. See which one breaks and whether or not the material recovers to its original dimensions. The call us to arrange a first hand look at some of the 500,000,000 square feet of Eterna-Seal already installed on metal roofs all across America.

Proven Performance...at a fraction of the cost

From sub-zero environments like Missoula, Montana to subtropical locations such as Leesburg, Florida, Eterna-Seal has been formulated to withstand extreme weather conditions.

Physical Properties

Elongation	600%
Recovery	99%
Moisture Permeability	0.2 perms
Tensile Strength	1600 psi

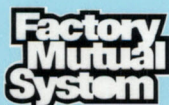
And since all Eterna-Seal shipments are manufactured to order, extra protection can be built-in to meet the specific concerns of a given area. So whether your roofs environmental demands exceptional cold weather flexibility, or extra UV protection, Eterna-

Seal's base formula can be further customized to meet the challenge. All for a fraction of the cost of metal replacement or single-ply retrofits.

Not Another Latex Coating!

Many coatings offer protection, but which system is really built to last? Eterna-Seal exhibits twice the elongation, 4 times the tensile strength, and half the permeability of other metal roof coatings. If you're looking for a solution to leaks and rust, these are the physical properties that assure long term performance. So next time you invest in restoring a leaky metal roof, specify Truco's Eterna-Seal system. You'll be glad you did.

Call for a free dry sample and a brief video presentation of Eterna-Seal® today!



Approved

TRUCO INC.

Protective Roof Coatings



800-706-1371
319-472-3479 Fax
1207 West 1st Street
PO Box 436
Vinton, Iowa 52349
www.stanleyroofing.com